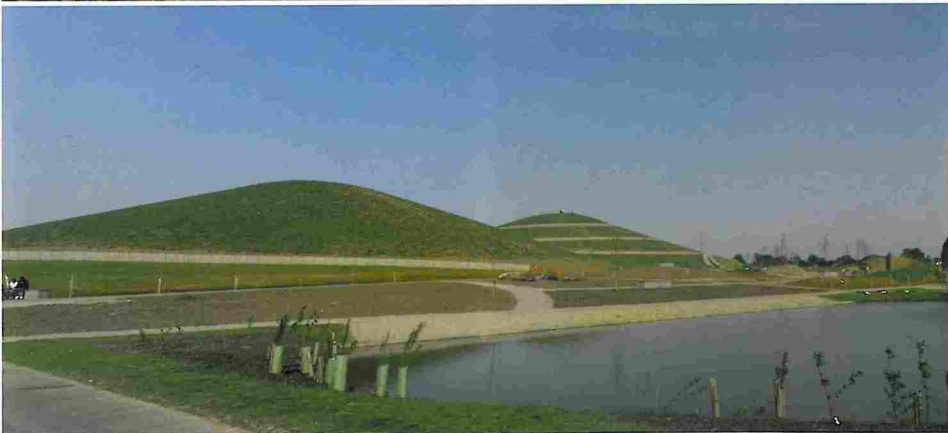
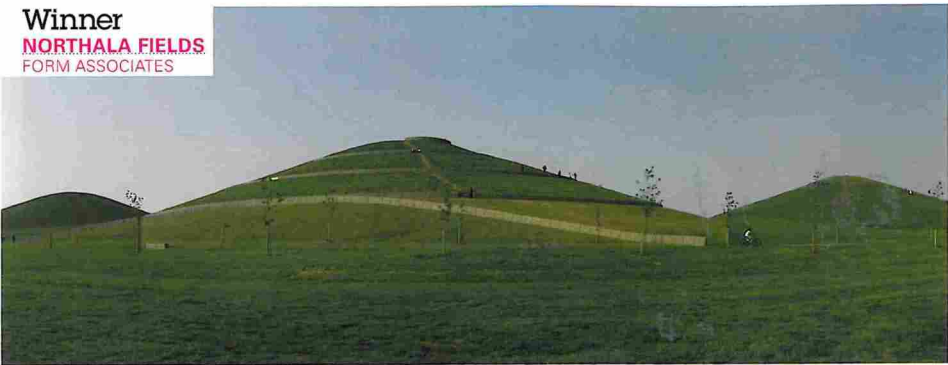


Winner  
**NORTHALA FIELDS**  
FORM ASSOCIATES



**WORK ON NORTHALA FIELDS, A** revolutionary new park development in Ealing, is now complete. The park, designed by artist Peter Fink together with architect Igor Marko of FoRM Associates, was constructed using 65,000 lorry loads of waste material.

The use of 100,000m<sup>3</sup> of imported inert waste material to create the new landform provided a solution to a number of site and development issues. It generated the necessary funds to enable the range of recreational and ecological benefits being sought on the site, eliminating any costs to the taxpayer. It also made a dramatic contribution to shrinking the ecological footprint of west London construction projects such as Wembley Stadium, White City and Heathrow Terminal 5. If the clean construction spoil had not been utilised by Northala Fields, 13,000 journeys of several hundred miles to outlying tips would have had to take place, in addition to the energy used for the passive processing of this quantity of material.

The benefits of constructing the landform using waste material are also aesthetic. At the heart of the design are four large mounds, the tallest at 26m, which not only shield the park from the noise of traffic on the adjacent A40, but also transform the park into a monumental piece of land

art, the largest of its kind in Europe.

Enhancing the recreation opportunities has been a priority in developing the design proposals. The park features separate lakes for model boating, fishing and wildlife, as well as both natural and modernised children's play areas. An outdoor entertainment amphitheatre was built into the new landform, providing a venue for local community and school events. Various cycle and pedestrian paths link into the surrounding cycle and public transport network.

Sustainability was an important feature of the park's design. In order to create natural habitats for wildlife, additional woodland planting has been added, along with a range of meadow types. The new watercourses will provide opportunities for water and wetland flora and fauna that are not currently present on the site.

Northala Fields has highlighted some important issues related to green spaces. A genuinely sustainable park can only be developed through a bi-partisan commitment lasting beyond a single political cycle.

The scheme demonstrates that the aspirations of today's community cannot be delivered as a legacy for tomorrow by politicians unwilling to engage with innovative approaches to funding and management of parks and green spaces.



**Client:** Ealing Council **Lead designers:** FoRM Associates **Ecology:** Peter Neal **Surveyor:** McKenzie Geospatial Surveys **Engineering:** Techniker Ltd and Peter Brett Associates **Project management:** EDAW **Soil scientist:** Progressive Restoration **Hydrologist:** Sue Cullum **Geotechnical:** TPS Consult **Planning:** DK Symes **Water management:** Kingcombe Aquacore **Design & build:** CJ Pryor (main contractor), CR Swill (landscape contractor), LDA Design (landscape architects)

## JUDGES' CATEGORY COMMENTS

A few well-designed schemes with a strong underlying concept, clearly presented and well executed, really stood out from the rest. The judges were extremely impressed with the winning entry, not only because of its distinctive design, developed from the initial concept, but also because it embraced the economic, environmental and social sustainability agendas.

**JUDGES:** ROBIN BUCKLE (CHAIR), DESIGN FOR LONDON, LIONEL FANSHAWE FLI, ASHLEY DUNSEATH CMLU