

景观 LANDSCAPE 设计 DESIGN

www.landscape.net.cn

48

城市中的绿色屋顶

第11月20日 NO.6

¥ 48.00元

ISSN 1672-7460



771672 746046

中国美术学院美术考级教材 素描分册 素描头像 素描半身像 素描全身像 素描静物 素描风景 素描建筑 素描人物 素描动物 素描植物 素描其他

特拉福德码头散步广场

Trafford Wharf Promenade

撰文 FoRM Associates 图片提供 FoRM Associates Webaviation McCoy Wynne
翻译 刘秋子

该项目位于当代著名建筑师丹尼尔·里伯斯金设计的帝国战争博物馆北部分馆前方，是一片码头区。由英国伦敦的FoRM Associates设计，现已对公众开放。

由FoRM Associates设计的艾尔维尔河公园长8km，连接着索尔福德、曼彻斯特和特拉福德。该项目使公园的第一部分更加完整。它与新建成的媒体城步行桥（由英国威尔金森·艾尔建筑事务所设计）一起形成了码头区关键的交通回路，并将成为大曼彻斯特的主要重建区。回路提升了人们在这一区域的步行体验——将英国媒体城（BBC新址）、帝国战争博物馆北部分馆、曼联球场和洛利艺术中心连接起来。

设计师巧妙地运用凹凸有致的几何图形创造出一个充满想像力的公共空间，与帝国战争博物馆北部分馆和新媒体城大桥形成互补。更重要的是，新构建的博物馆入口接待了博物馆超过50%的访客，活跃了博物馆的临河区域。

曼彻斯特船舶运河沿岸最初的交通隔离问题已经随着码头平台与水上阶梯区的建成而解决，人们可以尽情地徒步或骑自行车穿行于博物馆的临时表演区和教育区等系列公共区域。阶梯状的长椅延伸至水边，在这里，无论昼夜，人们都可以欣赏到该地区优美的景色。

“在该项目之前，我们从未听说过这一设计公司；但之后的合作让我不得不肯定他们是我合作过的最具有创新能力、最专业的团队。在按时完成该项目的前提下，他们利用有限的预算创造出了一个充满想像力、识别度极高的作品。设计师十分清楚，这部作品的简约风格不仅仅要给人们带来视觉上的享受，还要通过技术上的认证。”——Pee1传媒财务主管Ed Burrows

艾尔维尔河公园

该项目将具有全国性意义，因为在未来的

15年内，这片被忽略的河边走廊将成为大曼彻斯特不可或缺的集连接性、协同性与联合性于一体的重要标志。在经济不景气的时期，该项目为私营和国营投资打下了坚实的基础，带动了经济增长，这也对西北地区产生了重大影响。该设计的总体规划环抱河流，好似重建与复兴的催化剂，创造一个可以引领曼彻斯特城区走上世界舞台的独特元素。这座新公园的规模在英国的都市生活中极其少见，它将成为新曼彻斯特——知识之冠王冠上的宝石，以庆祝其独特的自然遗产以及创造出欧洲最充满生机、最活跃、最令人向往的滨水胜地。该项目的占地面积与覆盖范围鲜有能及，依据新的政府公共领域投资计划推断，其在文化以及象征性上的意义远比复杂的河边走廊改造意义更大，可以与2012年的奥林匹克公园相媲美。

艾尔维尔河已经成为了这座城市财富的永久性标志。在重建风潮掀起的20年里，这一

区域始终被忽略，利用不当使得将大曼彻斯特恢复成一个雄伟的欧洲城市的目标难以彻底完成。这座新的线性滨水公园将改变该地区数十年来被忽视的命运，消除索尔福德、曼彻斯特与特拉福德之间的物理隔离，而这条河就是阻隔三者之间交流的障碍。该项目中，设计师对艾尔维尔河进行充分利用，形成一个统一的聚会场所，并且使之成为实现人们共同利益的象征，是重建该市工程的下一个重要目标。该项目将大曼彻斯特提升到新的高度，并有助于其重新成为国际都市中心。

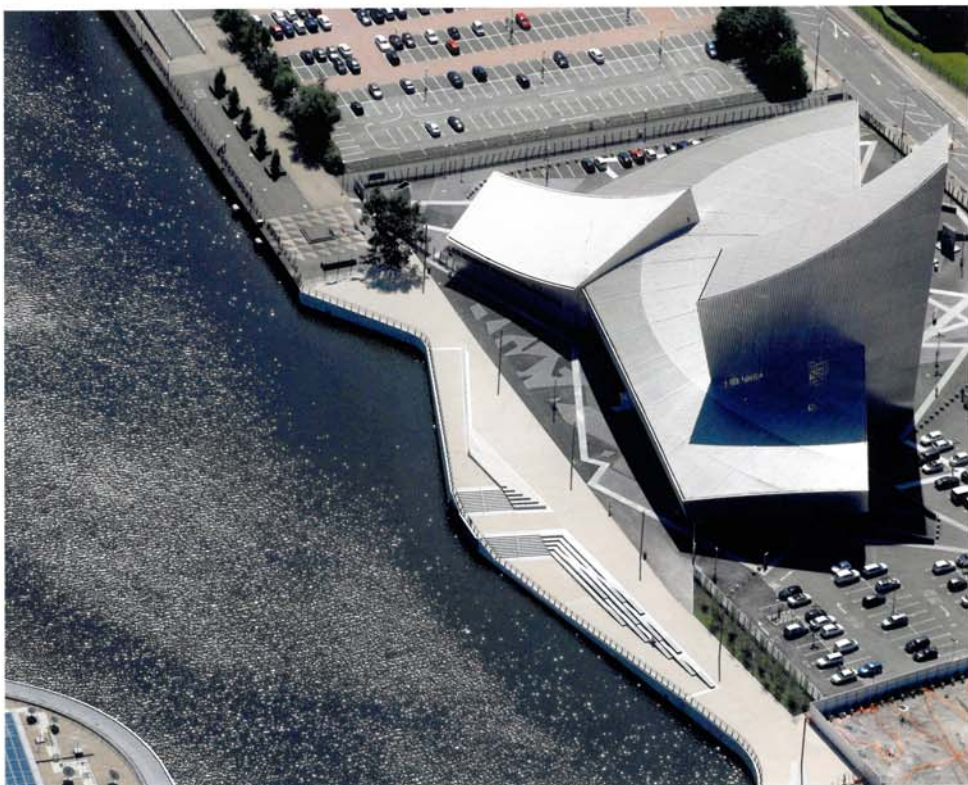
该项目不仅拥有大片的娱乐区域，其重建工程还能为当地人民带来利益，更是该市绿色基础设施发展与评估试验区。该项目的重要性包括降低城市热岛效应、降低洪水的突发性，并且有利于可再生能源的发展，但其中最重要的是它促进了非机动车交通方式的发展。它不仅带来了健康的生活方式，更是这座以可持续

从英国媒体城步行桥看到的景色1

从英国媒体城步行桥看到的景色1



总平面图



几何图形码头鸟瞰图

发展为理念的城市中的一个重要元素，这座线性公园为行人和骑自行车的人提供了一个高品质的战略性运动干道，将位于索尔福德港内的媒体城与位于该地区中心的Greengate以及维多利亚大街连接起来。

新的总体规划完成了一个重要的细节转变——长达8km的艾尔维尔河（曾为国内一条重要的工业水路）被改建成了一座世界级线性公园。在规划预算只有3000万英镑（源于公共以及私人投资）的条件下，该项目是英国国内最大的独立公共区域项目。改进后的总体规划包括升级现有的公共人行道，构建三个主要的新公共空间和三座新步行天桥来加强与河对岸的沟通。该项目以索尔福德、曼彻斯特和特拉福德三座城市的市政府的密切合作为基础，项目还包含一系列拥有广阔开发、重建空间的综合区域。这个充满雄心的计划将涉及众多社会团体、投资者和开发团队来确保其能够满足当地居民与其他利益共享人的需要和期望。



鸟瞰图



从桥上看到的景色与前梯状长椅



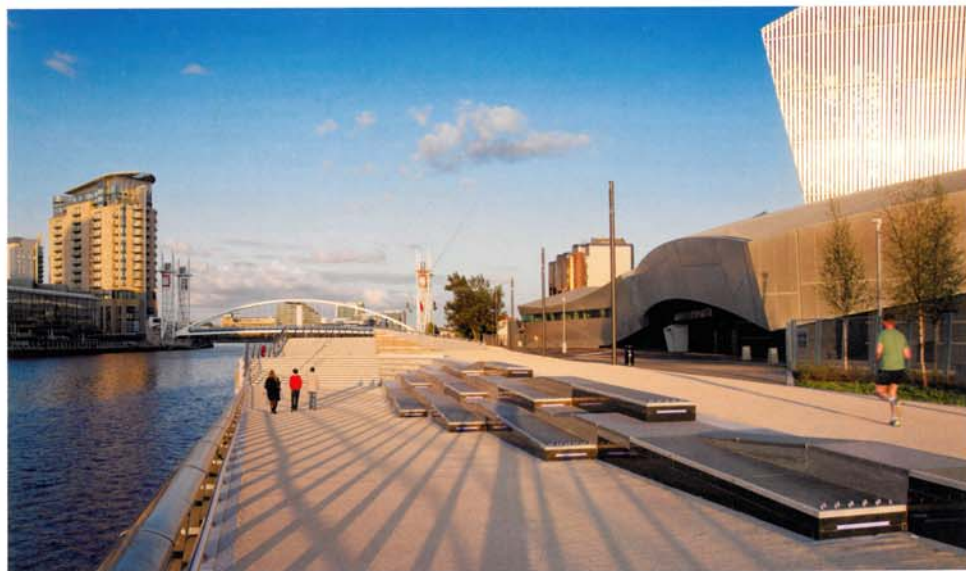
以帝国战争博物馆为背景看到的城市景观

Quayside designed by London-based FoRM Associates in front of Imperial War Museum North by Daniel Libeskind is now open to the public. The new quayside completes the first section of the Irwell River Park masterplan, 8km long river edge park linking Salford, Manchester and Trafford developed by FoRM Associates in 2010. With the adjoining new Media City foot bridge by Wilkinson Eyre Architects the quayside delivers an important new strategic circulation loop in the Quays, a key regeneration zone in Greater Manchester. The loop helps to transform the experience of walking in the area through linking Media

City UK—the new home of the BBC, with the IWMN, Manchester United Stadium and Lowry Arts Centre. FoRM's design of the quayside plays with convex and concave geometries, creating an imaginative public realm complementing the designs of both the IWMN and the new Media Bridge. Importantly the project also actively orientates the IWMN towards its water edge with its newly constructed additional entrance now admitting over 50% of the museums visitors. The original severance to movement along the Manchester Ship Canal was resolved by a newly constructed

deck and stepped area built over water, delivering generous pedestrian and cycling connectivity as well as a series of public realm spaces that serve as informal performance/educational resource for the museum. Terraced seating leading down to the water's edge provides excellent views of the area making the new quayside already a popular destination both during the day and the evenings.

"FoRM Associates were not known to Peel before the Trafford Wharf commission. They proved to be one of the most innovative and professional consultants I have worked with. The project



从英国媒体城看到的景色 2



夜色中的英国媒体城

was delivered not just on time and entirely within a tight budget but with great flair and imagination. FoRM clearly understood their brief and delivered not just a visual delight but, in concert with the structural engineer produced a technically sound and simply constructed solution." Ed Burrows, Property Director, Peel Media

Irwell River Park

Irwell River Park is a project of national significance that will transform in the next fifteen years the currently neglected river corridor into

a powerful symbol of connectivity, synergy and unity for Greater Manchester. Its impact will be momentous for the North West region, delivering significant economic gains at a time when the economic climate is under stress, creating a solid foundation for future private and public sector investment. The masterplan embraces the river as a catalyst for regeneration and renewal, creating a unifying element that will move the Manchester City Region onto the world stage. This new park, on a scale of urbanism rarely seen in the UK, will become the jewel in the crown of the

new Manchester: Knowledge Capital, celebrating its unique heritage and creating one of the most vibrant, exciting and desirable waterfront destinations in Europe. However ambitious this project may be in terms of its physical scale and reach—and it is possibly as significant as the 2012 Olympic Park in terms of new public realm investment—its cultural and symbolic importance far outweighs the complex physical transformation of the river corridor.

The river Irwell has been a constant symbol of the fortunes of the city. Its continuing state of dereliction and underuse after two decades of progressive regeneration reflects the incomplete success of Greater Manchester's reinstatement as a great European city. The new linear waterfront park will turn the tide on decades of neglect and heal the physical severance between Salford, Manchester and Trafford, during which, instead of the garden fence over which they talk to each other, the river has become the back wall which separates them. The appropriation of Irwell as a unifying element, meeting place and symbol of shared values is an essential next step in the process of recreating the city. Irwell City Park is a once-in-a-generation opportunity to lift the regeneration of Greater Manchester onto a new level and reposition the city as a genuinely international urban centre.

In addition to its huge recreational and regeneration benefits for the local population, the project is a pilot for the development and assessment of Green Infrastructure in the city region. Critical elements of the Irwell River Park project include

contributions to future-proofing the city in terms of the urban heat island, flood risk and renewable energies, but of overarching significance is the project's contribution to non-vehicular modes of transport. Apart from the numerous health and lifestyle benefits these bring, they are seen as an essential ingredient in the development of a sustainable model for the ongoing regeneration of the centre of the conurbation, with the linear park providing a high quality strategic movement artery for pedestrians and cyclists, linking the new Media City in Salford Quays to Greengate and Victoria Street in the regional centre.

The evolved master plan covers in considerable detail the transformation of an 8km stretch of the River Irwell, once one of the most important industrial waterways in the country, into a world class linear park. With an estimated value of £ 30 million IRP to be met from many types of public and private sources of investment it is one of the largest single public realm projects in the country. The evolved master plan includes the creation or upgrading of shared use cycle-pedestrian routes, 3 major new public spaces and 3 new footbridges to enhance linkages across the river. The creation of this exciting new waterfront destination for Greater Manchester is built on a close collaborative relationship between the three authorities for whom the river forms an administrative boundary: Salford City Council, Manchester City Council and Trafford Metropolitan Borough Council. The project also includes a complex interface with a wide range of development sites and regeneration strategies, and an ambitious engagement process will involve numerous community, stakeholder and developer groups to ensure that the designs for Irwell River Park are built on the needs and aspirations of local people and other stakeholders. [6]



坐在石凳上欣赏夜景



从英国媒体城步行桥上看到的景色



完善的照明系统



交错的阶梯

项目位置：英国特拉福德
客户：Peel 传媒
景观设计：FoRM 联合公司
工程设计：Gifford
建成时间：2011 年

Location: Trafford, UK
Client: Peel Media
Landscape Design: FoRM Associates
Engineering: Gifford
Completion Date: 2011